



- PRESS RELEASE -
Thursday, April 9, 2015

For More Information Contact:
PATRICIA CARDENAS
Communications Director
Dir. Line: 361.885.6124
Cell: 361.816.3621
patricia@pocca.com

On Track for Progress Nueces River Rail Yard Phase I Grand Opening

Corpus Christi, TX, USA – Port Corpus Christi is proud to announce the opening of Phase I of the Nueces River Rail Yard. A special ceremony will be held in honor of this momentous occasion at the Nueces River Rail Yard on Friday, April 10, 2015, at 1:00 p.m.

As rail traffic increased dramatically over recent years at Port Corpus Christi, The Nueces River Rail Yard was conceived in a realization of the critical impact efficient rail service provides for port operations, existing customers, and future customers. As part of a Port Corpus Christi Rail Master Plan, a new main interchange yard at the west end of the Inner Harbor was identified as a number one priority.

"The expansion of the Port's capabilities is an important logistical project, and a critical component to the Port's strategic diversification efforts. The Nueces River Rail Yard will support the unprecedented regional growth, and expand our capabilities in moving goods for new and already established industries around the Port," said **Judy Hawley, Port Commission Chair.**

The Nueces River Rail Yard project includes a 9,920 foot long unit train siding capable of storing a full 160 car unit train siding adjacent to the Fulton Corridor Lead track that serves Port Industries. Unit trains are increasingly used for shipment of grain, sand, rock, liquids, and other

similar cargo. The new rail interchange, Nueces River Rail Yard, will initially consist of four parallel ladder tracks for a total yard capacity of 15,300 feet and 253 rail cars. This new rail yard will greatly improve efficiency of existing cargo movement at Port Corpus Christi's multimodal facilities.

French Thompson, BNSF Director of Public-Private Partnerships said, *"The Nueces River Rail Yard is an excellent example of where public entities and private entities can align interest, jointly invest and develop infrastructure which serves both the public and private interests and create economic opportunity for all included. This is truly an example of a successful Public-Private Partnership and BNSF uses this as a shining example for similar projects across the state of Texas and the country as a whole."*

This collaborative effort is a two phase project. Phase I is a \$17.8M construction project utilizing \$10M from a federal TIGER grant. Remaining funds are covered by Union Pacific, Kansas City Southern, Burlington Northern Santa Fe, Genesee and Wyoming, and Port Corpus Christi. Commencement of phase II construction coincides with the opening of phase I and is funded by a \$22M grant from TxDOT and \$6M from Port Corpus Christi. With a scheduled completion by first quarter of 2017, phase II capacity will increase the NRRY to eight, 8000' long unit train sidings and 1,247 rail car storage capacity.

"KCS is pleased with this development and the resulting operational efficiencies and business opportunities," said **KCSR Vice President Sales and Marketing Owen Zidar**. *"We look forward to working with the port to grow trade across the U.S.-Mexico border."*

"This new facility will make the Port more competitive and more environmentally friendly. This is a great public private partnership that will make rail operations more efficient between the UP and the Port of Corpus Christi. This is a long term investment in the Nueces area for current and future business growth," said **UP's Director of Gulf Ports, Tyson O. Moeller**.

David Besio, Vice President Transportation, Genesee & Wyoming- Coastal Region said *"For nearly two decades Genesee & Wyoming Coastal Region has enjoyed great working relationships with the port, its customers and with our Class I partners UPRR, BNSF and KCS."*

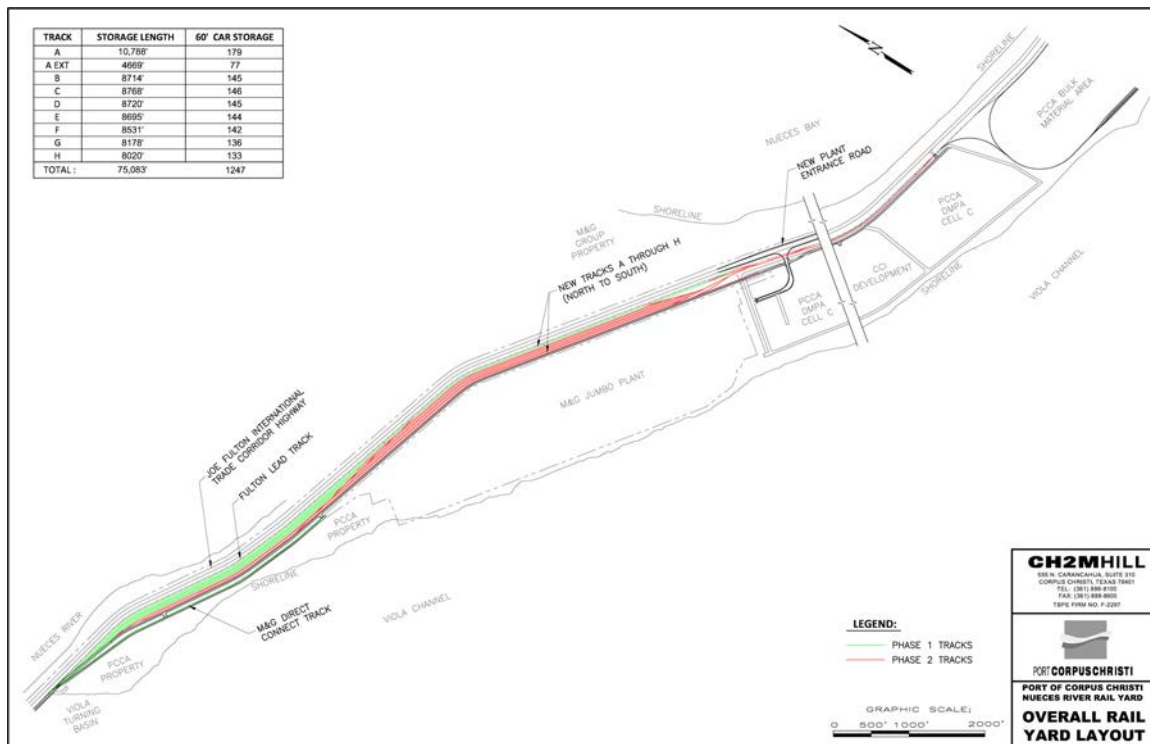
The growth projections along the Texas coast are significant especially for the Port of Corpus Christi and its partners and the Nueces River Rail Yard expansion is a giant step in helping us meet the challenges that go along with this growth."

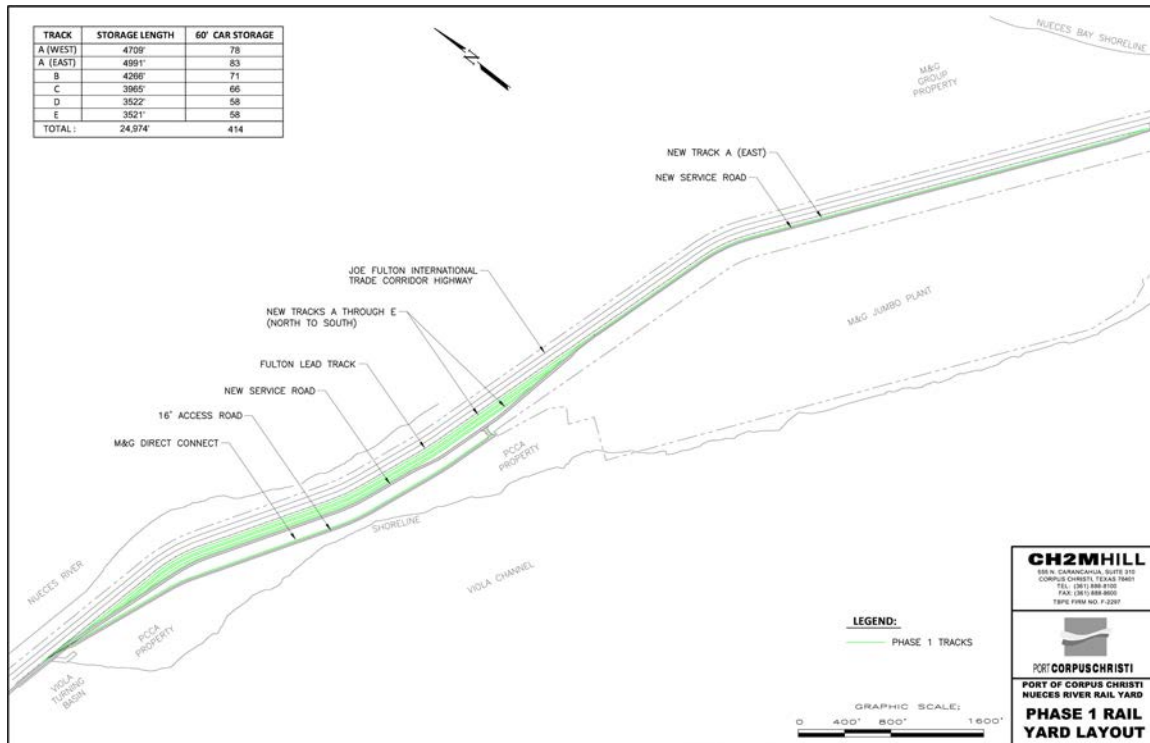
WHAT: Grand Opening Ceremony of the Nueces River Rail Yard at Port Corpus Christi

WHEN: Friday, April 10, 2015; 1:00 pm – 3:00 pm

WHERE: Nueces River Rail Yard

8357 Joe Fulton International Trade Corridor, Corpus Christi, Texas 78409





About Port Corpus Christi

As the primary economic engine of the Coastal Bend, Port Corpus Christi is the 5th largest port in the United States in total tonnage. The Port's mission statement is to "serve as a regional economic development catalyst while protecting and enhancing its existing industrial base and simultaneously working to diversify its international maritime cargo business." Strategically located on the western Gulf of Mexico, with a straight, 45' deep channel, the Port provides quick access to the Gulf and the entire United States inland waterway system. The Port delivers outstanding access to overland transportation with on-site and direct connections to three Class-1 railroads and uncongested interstate and state highways. The Port is protected by a state-of-the-art security department and an award-winning Environmental Management System. With outstanding management and operations staff, Port Corpus Christi is clearly "The Port of the Lone Star State."

<http://www.portofcorpuschristi.com/>

*Port Corpus Christi is a member of **START (South Texas Alliance for Regional Trade)**, a collaborative effort that highlights business opportunities in South Texas in the manufacturing, energy, aerospace, international trade, military and other sectors and the related strategic support provided by Port San Antonio, Port Corpus Christi and Port Laredo. <http://www.southtexastrade.com/>*

- Come Sea Us; Join Your Port of the Lone Star State on Social Media •



###